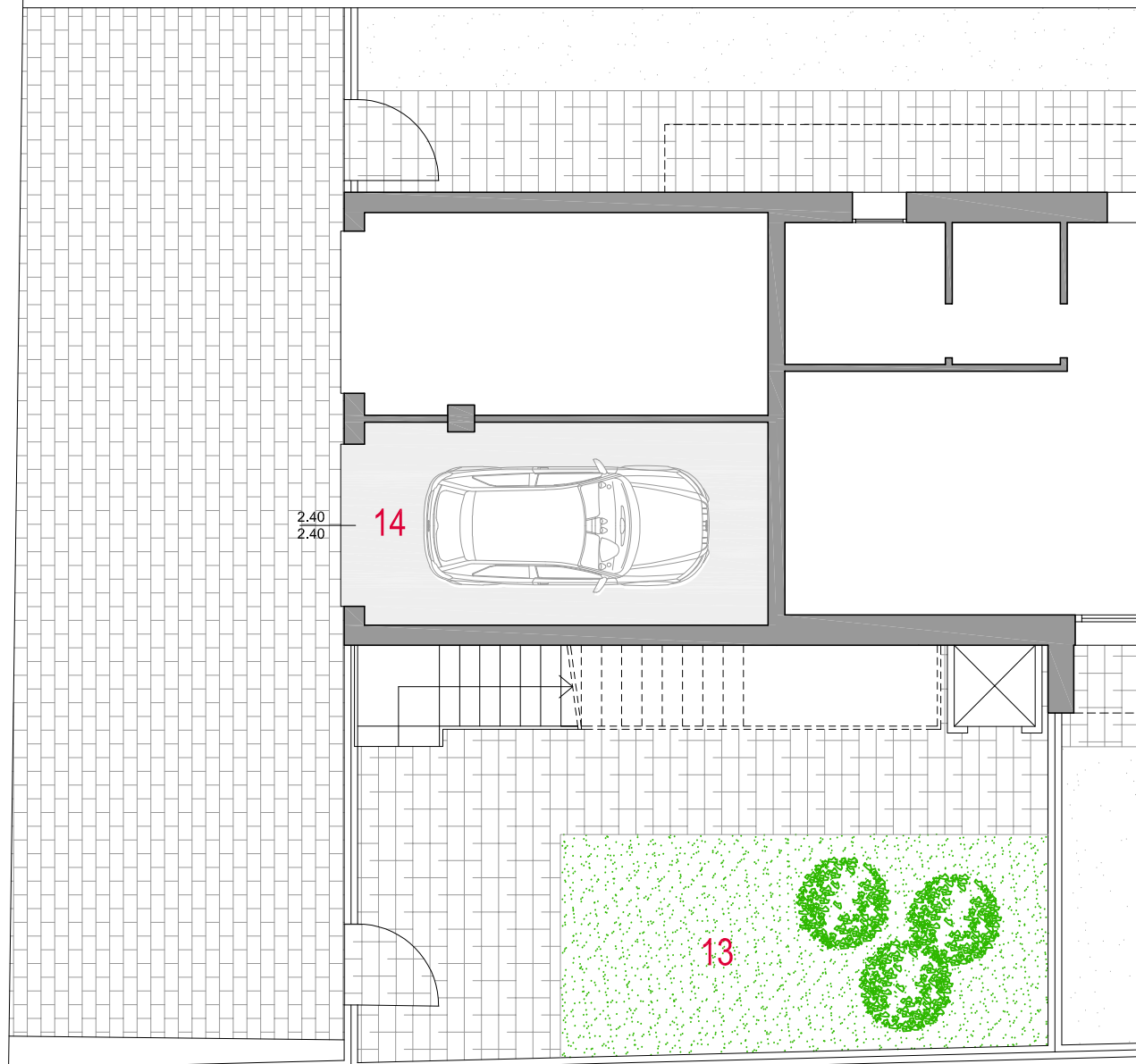
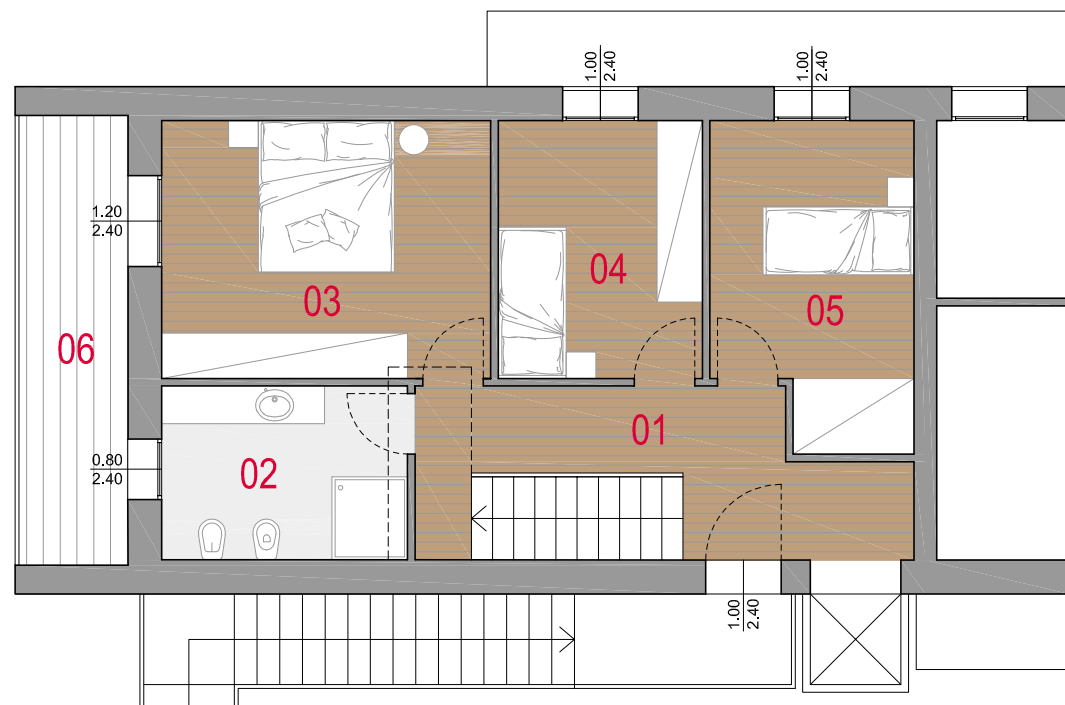


UNITA' B - PIANO TERRA | PRIMO | SECONDO

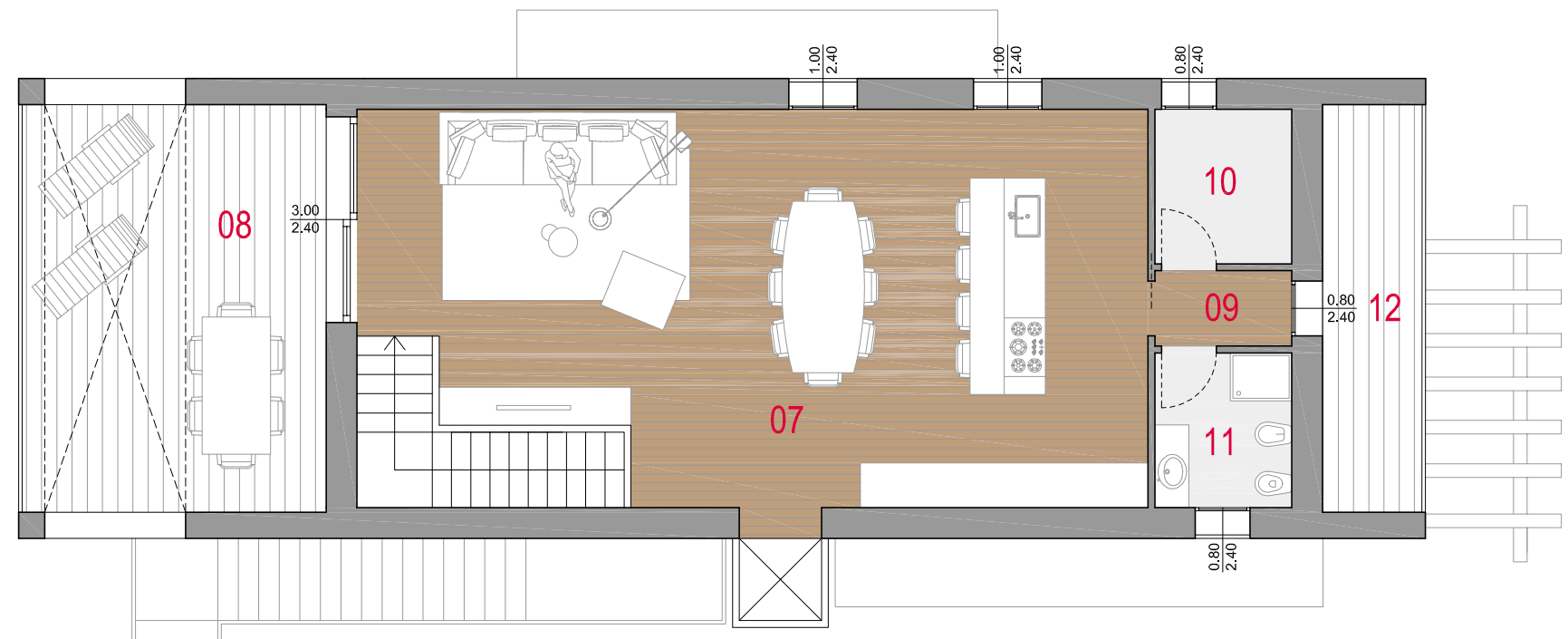
| | |
|------------------------|-----------|
| 01_DISIMPEGNO | mq. 9,40 |
| 02_BAGNO | mq. 7,48 |
| 03_CAMERA MATRIMONIALE | mq. 14,84 |
| 04_CAMERA | mq. 9,20 |
| 05_CAMERA | mq. 10,80 |
| 06_LOGGIA | mq. 8,59 |
| 07_SOGGIORNO CUCINA | mq. 60,74 |
| 08_TERRAZZO | mq. 26,41 |
| 09_DISIMPEGNO | mq. 2,20 |
| 10_LAVANDERIA | mq. 4,51 |
| 11_BAGNO | mq. 4,51 |
| 12_LOGGIA | mq. 8,59 |
| 13_GIARDINO PRIVATO | mq. 61,84 |
| 14_GARAGE | mq. 18,00 |



PIANTA PIANO TERRA



PIANTA PIANO PRIMO



PIANTA PIANO SECONDO

scala 1:100

